

KCH OBSERVATION SERVICE CHEAT SHEET FOR THE ED

Observation Service (Obs) is a co-managed and co-operated service between the Departments of Emergency Medicine and Internal Medicine.

LAUNCH: Tuesday, December 6th at 10AM (pts admitted previously to obs will be sent over to unit)

HOURS of OPERATION: 24 hours/7 days a week

OBSERVATION PERIOD: up to 48 hours (specific exception to allow for 52 hours - pts pending results)

UNIT DETAILS: Observation Unit located in C-Building ground floor. The OU is a 12-bed unit each with tele-monitoring. Telephone number for the unit 718-245-7993.

EM RESIDENT OBS PAGER: 917-219-1555

COVERAGE:

RESIDENT COVERAGE							
Times	SUNDAY	MONDAY	TUESDAY	WEDNESDAY	THURSDAY	FRIDAY	SATURDAY
7AM – 3PM		EM	EM	IM Resident	EM	EM	
3PM – 11PM		EM	EM	EM	EM	EM	
11PM – 7AM	IM - Blue Night Float (@12AM)	EM	EM	EM	EM	IM - Blue Night Float (@12AM)	IM - Blue Night Float (@12AM)

ATTENDING COVERAGE							
Times	SUNDAY	MONDAY	TUESDAY	WEDNESDAY	THURSDAY	FRIDAY	SATURDAY
8AM – 4PM	IM	IM	IM	IM	IM	IM	IM
4PM – 12AM	IM	IM	IM	IM	IM	IM	IM
12AM – 8AM	EM prn	EM (Quad 3/4)	EM (Quad 3/4)	EM (Quad 3/4)	EM (Quad 3/4)	EM prn	EM prn

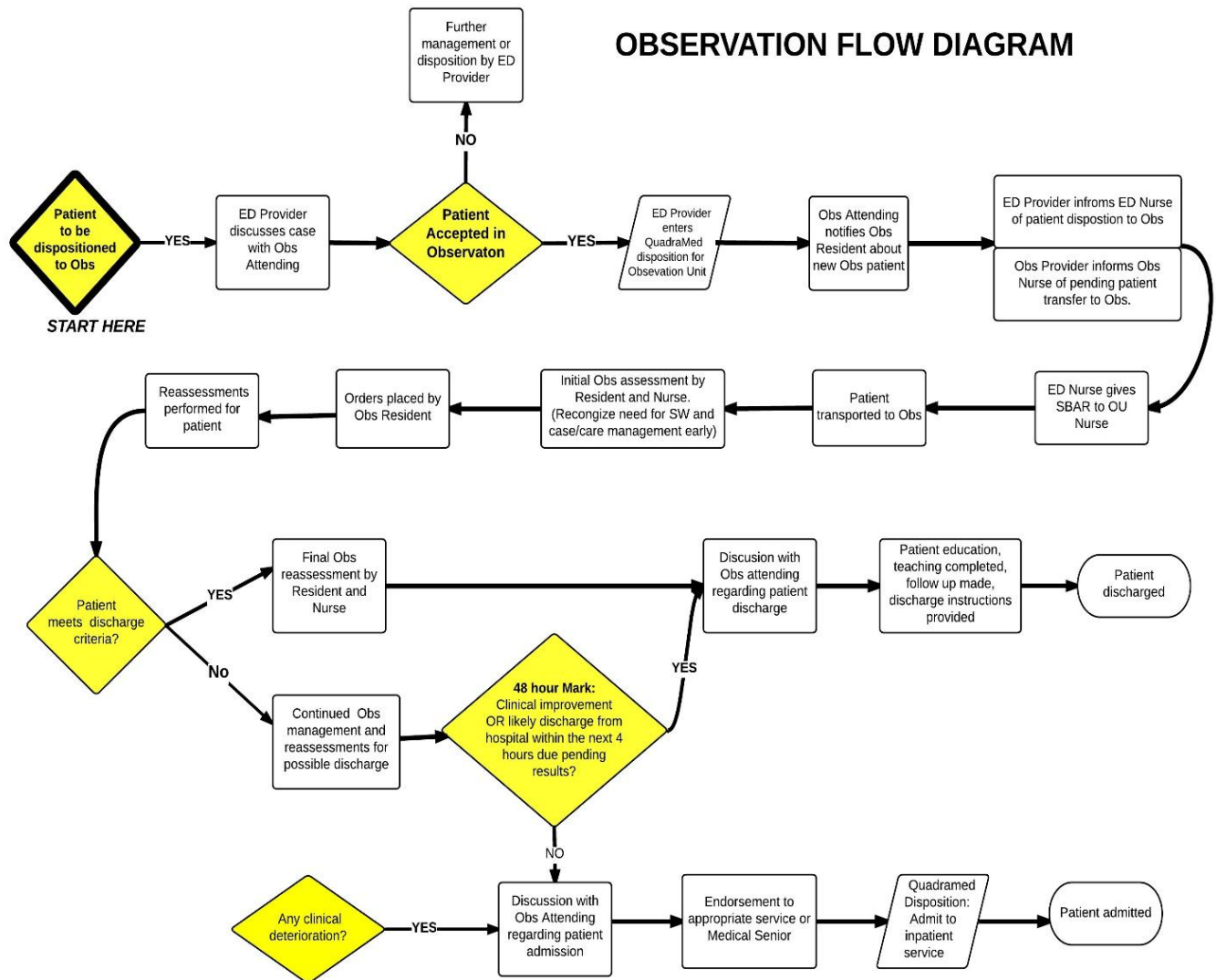
QMED DOCUMENTATION–

- See Dr. Peacock's prior email
- ED Providers disposing patients to OBS - starting Tuesday, always select **Medicine observation**

DISPOSITIONS TO OBS:

- Must be discussed with and accepted to observation by the covering Obs attending. During weekend (Fri-Sun) overnights admissions will go directly to medical senior.
- **IM Attending Coverage** – available on Amion - www.amion.com (login – Kings med (case & space sensitive) no password).
- Page the respective IM attending for admissions or call the Obs unit at 718-245-7993
- During EM coverage times the Obs Attending is the Quad 3/4 attending

OBSERVATION FLOW DIAGRAM



CLINICAL GUIDELINES:

- | | | | |
|----|--------------------------------|----|----------------------|
| A. | General – Open Criteria | I. | DVT/PE (stable) |
| B. | Allergic Reaction | J. | Dehydration/Vomiting |
| C. | <i>Arrhythmia - pending</i> | K. | Hyperglycemia |
| D. | Asthma | L. | Hypoglycemia |
| E. | Cellulitis | M. | Pneumonia |
| F. | Chest Pain | N. | Pending Procedure |
| G. | <i>CHF - pending</i> | O. | Transfusion |
| H. | COPD | P. | Syncope |